

FARM LAND AUCTION

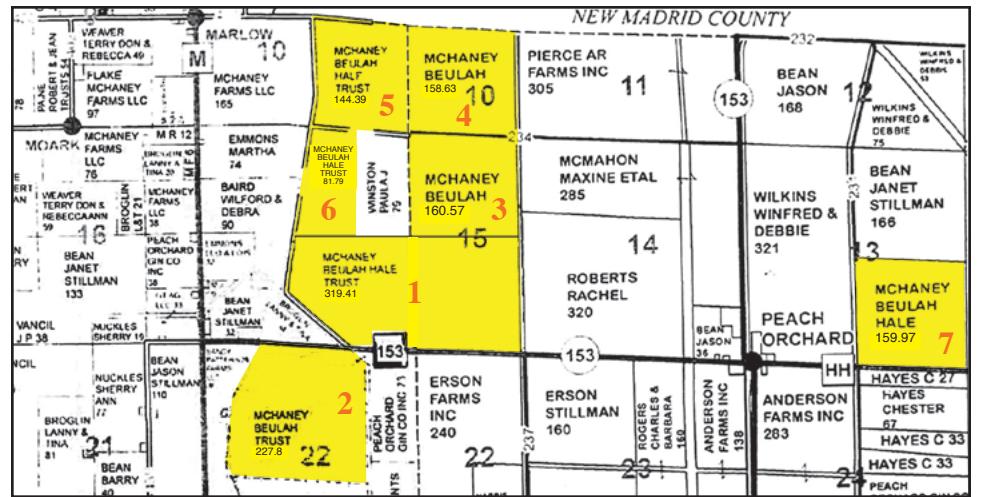
1,640 Acres +/-
To Be Sold In 12 Tracts
Located in Pemiscot,
Dunklin and New Madrid
County, Missouri

WEDNESDAY, JUNE 21, 2017 Sale Time: 1:30 p.m.

KENNETT, MISSOURI (Sale Site: American Legion Building)

AUCTIONEER'S NOTE: DeWitt Auction Co. has been engaged by the Trustees of The Beulah Hale and Hal Henry McHaney Trust to sell at public auction the following listed tracts of high producing Southeast Missouri farm land. The majority of this land is irrigated with high base acres. The farms will be selling complete with pivots and irrigation pumps. **FSA report 156 E2 will be available at auction.** These farms will be sold in order of tract number and each sale will be final. These farms will not be put back together or offered in combinations. By direction of The Trust the proceeds of the sale will be donated to selected charities. **NOTE:** Base acre information was obtained from FSA and will be prorated out by FSA. All announcements made day of sale take precedence over printed material.

OWNER: THE BEULAH HALE AND HAL HENRY McHANEY TRUST



TRACT 1 – 319.41 ACRES

Located: TWP 20N RNG 10E SEC 15
 This farm is graded with two 16 inch wells with electric turbine pumps. FSA farm #6805. This farm is one block of land and lies in Pemiscot and Dunklin County, Missouri.

TRACT 2 – 227.8 ACRES

Located: TWP 20N RNG 10E SEC 22
 This tract is located in Dunklin County, Missouri. The North 79.08 acres is graded with a 12 inch well and turbine pump. The South 148.77 acres has two Zimmatic 5-tower pivots, one well with underground pipe to supply both pivots, and one Case IH 4391T power unit with a generator. FSA Farm #6805.

BASE ACRES – FSA Farm #6805

Generic	454.8 Acres
Corn	53.6 Acres
Grain Sorghum	6.69 Acres
Soybeans	24.18 Acres
Total Base Acres	539.3 Acres
Total Cropland Acres	547.21 Acres

TRACT 3 – 160.57 ACRES

Located: TWP 20N RNG 10E SEC 10
 This farm is in Pemiscot County, Missouri. FSA Farm #5503. This farm is graded and has a 16 inch well and turbine pump.

TRACT 4 – 158.63 ACRES

Located: TWP 20N RNG 10E SEC 10
 This farm is in Pemiscot County, Missouri. FSA Farm #5503. This farm is graded and has a well and turbine pump.

TRACT 5 – 144.39 ACRES

Located: TWP 20N RNG 10E SEC 10
 This farm is in Dunklin County, Missouri. FSA Farm #5503. This tract has a well and a 6-tower Zimmatic Pivot, and turbine pump with no power unit.

TRACT 6 – 81.79 ACRES

Located: TWP 20N RNG 10E SEC 15
 This farm is in Dunklin County, Missouri. FSA Farm #5503. This tract is graded with a 16 inch well and turbine pump.

BASE ACRES – FSA Farm #5503

Generic	363.5 Acres
Corn	92.8 Acres
Soybeans	75.1 Acres
Total Base Acres	531.4 Acres

TRACT 7 – 159.97 ACRES

Located: TWP 20N RNG 10E SEC 13
 This farm is in Pemiscot County, Missouri. FSA Farm #3152. This tract has a 7-tower Valley Pivot with a well and submersible pump.

BASE ACRES – FSA Farm #3152

Generic	132.4 Acres
Corn	13.65 Acres
Soybeans	13.65 Acres

TRACT 8 – 115.96 ACRES

Located: TWP 17N RNG 10E SEC 4
 This farm is in Dunklin County, Missouri. FSA Farm #7030. This tract is graded with two wells and turbine pumps.

BASE ACRES – FSA Farm #7030

Rice Long Grain	96.82 Acres
Soybeans	32.28 Acres

TRACT 9 – 79.04 ACRES

Located: TWP 17N RNG 10E SEC 5
 This farm is in Dunklin County, Missouri. FSA Farm #7029. This tract is graded with a well and turbine pump.

TRACT 10 – 77.77 ACRES

Located: TWP 18N RNG 10E SEC 32
 This farm is in Dunklin County, Missouri. FSA Farm #7029. 68.49 acres of this tract is graded with a well and turbine pump. 9.28 acres lays across the levy.

BASE ACRES – FSA Farm #7029

Rice Long Grain	105.92 Acres
Soybeans	37.98 Acres
Base Acres	143.9 Acres
Crop Land Acres	156.81 Acres

TRACT 11 – 76.3 ACRES

Located: TWP 20N RNG 10E SEC 10
 This farm is in New Madrid County, Missouri. FSA Farm #5503. This tract is graded with a 16 inch well and turbine pump.

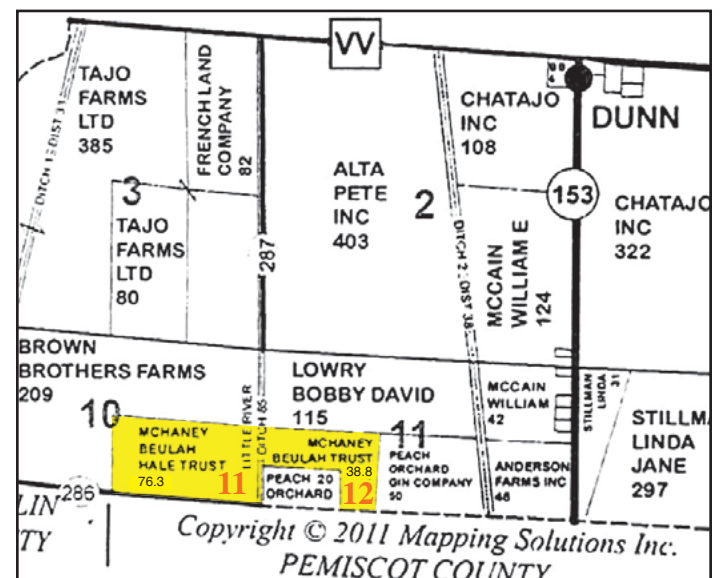
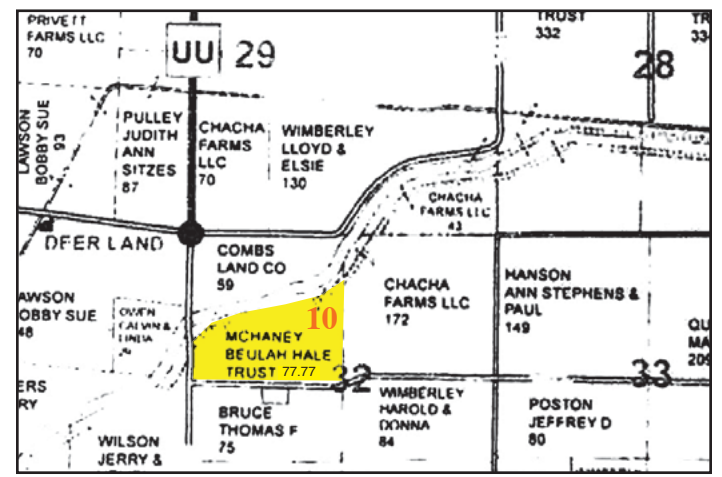
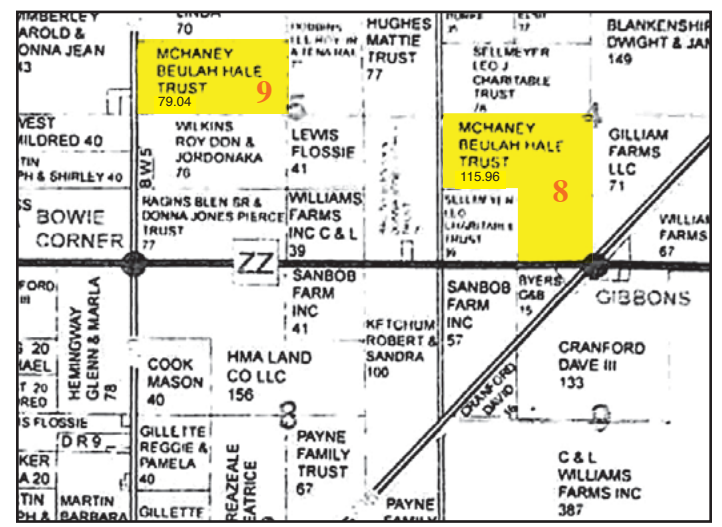
TRACT 12 – 38.8 ACRES

Located: TWP 20N RNG 10E SEC 11
 This farm is in New Madrid County, Missouri. FSA Farm #5503. This tract is graded with a well.

BASE ACRES – FSA Farm #5503

Generic	66.2 Acres
Corn	25.15 Acres
Soybeans	20.35 Acres

Tracts 1, 2, 3, 4, 5, 6, 7, 11 and 12, are located near the Peach Orchard, MO community. Peach Orchard is located approximately 5 miles south of Gideon, MO and approximately 15 miles northeast of Kennett, MO. Tracts 8, 9, and 10 are located in the Gobler, MO community approximately 10 miles southeast of Kennett, MO. See plat maps for location of farms.



SALE CONDUCTED BY

Visit Our Website: www.dewittauction.com

DeWitt Auction Co.

Member Mo. & Miss. Auctioneer Assoc. - Lic. Nos: MO 14 & 85; AR 390 & 404; AL 611 & 1317; LA 239; Phil DeWitt MS 292; IL Firm No. 444000276; MS Firm No. 410F; TX 6538 & 10982; TN Firm No. 2422; KY 6028; FL 1535; Brandon DeWitt AR 2535, IL 441.002267, MS 1471; Jack Holifield TN 6847, AL 5350, LA 19365; Larry Garner TN 259, AL 100, AR 1764, MS 209
 Nicole DeWitt MO Real Estate Broker/Broker-Officer Lic. #2010010870/Corp. Lic. #2013017734

PLANNING AN AUCTION? CONTACT:
DEWITT AUCTION CO.
 220 DeWitt Drive
 Sikeston, MO 63801
 573-471-1060 - 800-533-9488

220 Dewitt Drive
 Sikeston, Missouri 63801
 573-471-1060 • 1-800-533-9488
 "Your Attendance Always Appreciated!"

For more information, contact:
Jack Holifield
 870-926-4173
 or DeWitt Auction Co.
 or visit www.dewittauction.com

Announcements made auction day take precedence over printed material.

TERMS: 10% of highest bid (non-refundable) due at conclusion of auction. Balance due on or before closing within 60 days. Closing will be handled by Pelts Title Co. in Kennett, Missouri. Closing costs will be divided equally between buyer and seller. The Trust will retain 2017 income and pay 2017 Real Estate taxes. Buyer will assume possession upon harvest of 2017 crop. FSA crop basis will be prorated by FSA. **6% Buyer's Premium** added to last bid in order to establish selling price and is payable day of auction. **NOTE:** We urge you to drive out and inspect these fine properties before auction day.