

# RETIREMENT AUCTION

TUESDAY,  
DECEMBER 8, 2020

SALE TIME: 10:00 A.M.

ORAN, MISSOURI



Owner: Lloyd Francis Farms, Inc.

DeWITT AUCTION CO.  
220 DeWitt Drive  
Sikeston, MO 63801

FIRST CLASS  
U.S. POSTAGE  
PAID  
Permit No. 273  
1 OZ.  
Sikeston, Mo. 63801

FIRST CLASS MAIL

# RETIREMENT AUCTION

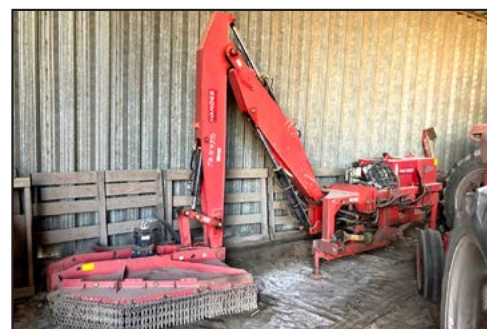
Tuesday, December 8, 2020

ORAN, MISSOURI SALE TIME: 10:00 A.M.

**DIRECTIONS:** From Oran, MO - Head northwest on S Railroad St toward State Hwy W. Turn left at the first cross street onto State Hwy W/Radcliff Rd and continue to follow State Hwy W for 6.8 mi. Turn right onto State Hwy P and continue on State Hwy P for 3.1 mi. Turn left onto County Rd 274 and continue on County Rd 274 for 2.9 mi. Destination will be on the left. **Physical Address:** 24804 County Road 302, Oran, MO 63771

Online bidding available at: [www.proxibid.com/dewittauctioncompany](http://www.proxibid.com/dewittauctioncompany)

Owner: Lloyd Francis Farms, Inc.



# RETIREMENT AUCTION



SALE TIME: 10:00 A.M. **TUESDAY,** SALE TIME: 10:00 A.M.  
**DECEMBER 8, 2020**

ORAN, MISSOURI

Owner: Lloyd Francis Farms, Inc.

**NOTE:** Mr. Gary Francis has decided to retire and has commissioned DeWitt Auction Co. to sell this list of clean, well-maintained farm equipment. Most was bought new and has been shedded. He has allowed a neighbor to add a small consignment to this auction.

**NOTICE:** THIS AUCTION IS CLOSED TO ANY OTHER OUTSIDE CONSIGNMENTS

**DIRECTIONS:** From Oran, MO - Head northwest on S Railroad St toward State Hwy W. Turn left at the first cross street onto State Hwy W/Radcliff Rd and continue to follow State Hwy W for 6.8 mi. Turn right onto State Hwy P and continue on State Hwy P for 3.1 mi. Turn left onto County Rd 274 and continue on County Rd 274 for 2.9 mi. Destination will be on the left. **Physical Address:** 24804 County Road 302, Oran, MO 63771

Online bidding available at: [proxibid](http://proxibid.com/dewittauctioncompany) [www.proxibid.com/dewittauctioncompany](http://www.proxibid.com/dewittauctioncompany)



SEE INSIDE FOR EQUIPMENT LISTING AND MORE PHOTOS

LUNCH AVAILABLE  
LOADER AVAILABLE

SALE CONDUCTED BY:

**DeWitt Auction Co.**

NO BUYER  
PREMIUM ADDED

Member Mo. & Miss. Auct. Assoc. - Lic. Nos: MO 14 & 85; AR 390 & 404; AL 611 & 1317; LA 239; Phil DeWitt MS 292; IL Firm No. 444000276; MS Firm No. 410F; TX 6538 & 10982; TN Firm No. 2422; KY 6028; FL 1535; Brandon DeWitt AR 2535, MS 1471, IL 441.002267, KY 4216, TN 6941; Jack Holifield TN 6847, AL 5350, LA 19365

PLANNING AN AUCTION? CONTACT:  
DeWitt Auction Co.  
Sikeston, Mo. 63801  
573-471-1060 • 1-800-533-9488

220 DeWitt Drive  
Sikeston, MO 63801  
573-471-1060 • 800-533-9488

"Your Attendance Always Appreciated"

FOR MORE INFORMATION, CONTACT:  
Gary Francis 573-270-0490  
or DeWitt Auction Co.  
or visit [www.dewittauction.com](http://www.dewittauction.com)

Note: DeWitt Auction Co. does not guarantee the hours or condition of any item sold in this auction. Announcements made auction day take precedence over printed material.



# RETIREMENT AUCTION

**NOTE:** Mr. Gary Francis has decided to retire and has commissioned DeWitt Auction Co. to sell this list of clean, well-maintained farm equipment. Most was bought new and has been shedded. He has allowed a neighbor to add a small consignment to this auction.

**NOTICE: THIS AUCTION IS CLOSED TO ANY OTHER OUTSIDE CONSIGNMENTS**



## TUESDAY, DECEMBER 8, 2020 - ORAN, MISSOURI

**OWNER: LLOYD FRANCIS FARMS, INC. - SALE TIME: 10:00 A.M.**

**DIRECTIONS:** From Oran, MO - Head northwest on S Railroad St toward State Hwy W. Turn left at the first cross street onto State Hwy W/Radcliff Rd and continue to follow State Hwy W for 6.8 mi. Turn right onto State Hwy P and continue on State Hwy P for 3.1 mi. Turn left onto County Rd 274 and continue on County Rd 274 for 2.9 mi. Destination will be on the left. **Physical Address:** 24804 County Road 302, Oran, MO 63771

Online bidding available at: [proxibid](http://proxibid.com)  
[www.proxibid.com/dewittauctioncompany](http://www.proxibid.com/dewittauctioncompany)



### TRACTORS

- 1-340 Case IH Magnum, MFWD, 50" Rear, Frt. Duals, RTK Guide, 2011 yr. 2586 Hrs., SN ZBRD02778
- 1-275 Case IH Magnum, MFWD, 50" Rear, Frt. Duals, RTK Guid., Pro 600 Monitor, 2008 Yr., 3553 Hrs., SN Z8RZ08409
- 1-275 Case IH Magnum, MFWD, 50" Rear, Frt. Duals, RTK Guid., Pro 600 Monitor, 4279 Hrs., SN Z7RZ06754
- 1-435 Case IH, 4 Wh., 710/70R42, 2010 yr., Autosteer, RTK, 5607 hrs., SN ZAF118666
- 1-8400T John Deere, 24" Tracks, 1997 Yr., 3906 Hrs., SN RW8400T902176
- 1-9230 Case IH, 4 wh., PTO, 3 Pt., 8395 Hrs., SN 27871
- 1-9230 Case IH, 4 Wh., PTO, 3 Pt., 8934 Hrs. (Rebuilt Motor at 8568 Hrs.) SN 27801
- 1-7120 Case IH Magnum, MFWD, 18.4x42 Duals, 4 Rev., 18 Sp., 2 PTO Shafts, SN 31027
- 1-7110 Case IH Magnum, 2 Wh., C/A, 4554 Hrs. (Engine Rebuilt at 2672 Hrs.), 14.9R46 Rear, 2 PTO shafts, SN JJA0019855
- 1-7110 Case IH, 4 Post, 2 PTO shafts, SN JJA0006778
- 1-886 International, 2 wh., dual shafts, 16.9x38 rear, Murphy Switch, SN 2490189U1142
- 1-3688 International, O/S, 2 wh., 18.4x38 Rear, 2 Shafts
- 1-F656 International, Gear Drive, Diesel, PTO, 2 Wh., 3 Pt., SN 29481
- 1-140 International, w/Cultivator, SN 30295
- 2-International Cub, 1-w/Mower
- 1-M Farmall, (needs to be rebuilt)

### SPRAYERS, SPRAY EQUIPMENT

- 1-ST510 Hagie Sprayer, 1000 Gal. SS Tank, Raven Guidance, Auto Steer, Auto Shutoff, 380/90R54, 2161 Hrs., SN 16110001084
- 1-Hagie NTB tool Bar, 16 Row, New Coulters, SN U6961331004
- 1-284 Hagie Sprayer, 800 Gal., 60' Boom, Light Bar, Auto Shutoff, 1997 yr., 4196 Hrs., SN 80579057

- 1-8250 Hagie Sprayer, auto shut off, outback boom pilot, 1990 yr., SN 10709083
- 2-Hagie Sprayers, Salvage
- 1-Great Plains 3 Pt. Sprayer, 300 Gallons
- 1-Schaben 16 Row Applicator, 1600 Gallons, SN 1042
- 1-KBH 12 row Fert. Appl., 30", 725 Gal. Tank
- 1-KBH 8 row Fert. Appl., 30", 500 Gal. Tank
- 1-12 row International 3 Pt. Flat Fold Anhydrous Applicator w/Raven Accuflow Control
- 1-35' Weed Wiper, (New), SN 1013819
- 1-Set Helicopter Spray Tanks w/pump, 300 Gal., Fit Case Magnum with Front Duals

### PLANTERS & DRILLS

- 1-1200 Case IH Pivot Planter, 12/23, SN CBJ022980
- 1-750 John Deere No Till Drill, 20', New blades, seed boots, SI Belt Meters, SN N00750X015660 & 15758
- 1-John Deere 1 row spot end planter, 5 galon corn bucket, w/seeder & tool bar

### FIELD EQUIPMENT

- 1-330 Case IH Turbo Till, 34', w/Baskets, SN YCD064293
- 1-340 Case IH Disk w/Remlinger Rolling Baskets, 28', 7.5" Spac., SN JFH0022195
- 1-370 Case IH Disk Harrow, cushion gang, 25', 9.5" Spac.
- 1-1000 Hiniker Cultivator, 16 Row, 30" Spac.
- 1-Brandt Hipper Roller, 16 Row.
- 1-144 Brillion XL Roller, 34'
- 1-Brillion Roller, 20'
- 1-Speedking Seed Tender, 2 Pro Box, Belt Auger
- 1-Bushog hipper, 16 Row, 30", tool bar
- 1-3500 Rhino Blade, 14', Like New
- 1-110 Unverferth Inline Ripper, 7 Shank
- 1-6500 Case IH Chisel Plow
- 3-5500 Case IH Chisel Plows, 13'
- 1-55 Case IH Chisel Plow
- 1-Ferguson PTO ditcher
- 1-183 International 8 Row Cultivator
- 1-980 John Deere cultivator, S Danish tines, 34'

- 1-Triple K Cultivator, 28'
- 1-Lilliston 8 Row Cultivator
- 1-Case IH 8 Row Rotary Hoe
- 1-Auccura-Trak Cultivator Guide
- 1-370 International Disk Harrow, 13'
- 1-470 International Disk Harrow, 13'
- 1-Poly Pipe Roller
- 1-Brillion V-Ripper w/Coulter Bar Attach.
- 1-Adams Nurse Tank, 1000 Gal., w/mixing cone & pump
- 1-W&A Nurse Tank, 1000 Gal.
- 1-UFT Nurse Tank, SS, 1000 Gal.

### MOWERS & CUTTERS

- 1-HX15 John Deere Mower, SN 109005
- 1-MX10 John Deere Cutter, SN 3398
- 1-RC-20 Rhino Cutter, SN 20364
- 1-2060 Hardee Ditchbank Mower, SN 0292H
- 1-2160 Hardee Ditchbank Mower, SN 9532

### HARVEST EQUIPMENT

- 1-7230 Case IH Combine, 2013 Yr., 36" Tracks, Auto Steer, Pro 700 Monitor, Leather, 1541 Eng. Hrs., SN YDG221070
- 1-1620 Case IH Combine, 4 Wh., 30.5L32 Frt., Showing 1713 Eng. Hrs. (Engine Rebuilt at 1642 hrs.), SN JJC0032284
- 1-2162 Case IH Header, 30', SN YBZN14858
- 1-2020 Case IH Header, 25', (less than 1,000 acres), SN YAZL52395
- 1-3408 Case IH corn head, Yield 360 gathering chains, w/brushes, SN YAS022299
- 1-843 Case IH Corn Head, SN 073099U023270
- 1-1020 Case IH Header, 17.5', SN JJC0065759
- 1-8 row 30" corn reel w/JD & Case baskets
- 1-Unverferth Header Trailer
- 2-Header Trailers
- 2-620 J&M Grain Carts, SN 6517 & 6678
- 2-BII Gravity Wagons, 1-w/auger
- 2-EZ Flow Gravity Wagons
- 1-MK130-61 Westfield Auger, 2 new gear boxes
- 1-Westfield 8" roll under auger, w/3 HP electric motor
- 1-1585 Batco Belt Auger, SN 156312

- 1-Mayrath Auger, 10"x61', swing around
- 1-Mayrath Auger, 8"x28', Honda Motor
- 1-Hutchinson Auger, 8"x60"
- 1-Mayrath 75' auger (needs gear box)

### TRUCKS, TRAILERS, UTV'S

- 1-2005 Freightliner Day Cab, Auto Trans., 18 Sp., 286,664 Mi., Wet Kit
- 1-2005 Freightliner Day Cab, Auto Trans., 18 Sp., 284,000 Mi., Wet Kit
- 1-2013 F-150 Ford Truck, 8' Bed
- 1-2001 F-350 service truck, elec. start air comp., 3200 lb. crain, 11' bed, 142,014 mi.
- 1-2003 Mountaineer, 121,893 mi.
- 1-1997 F-250 Service Truck, 200,000 Mi., 4 Wh.
- 1-1976 GMC Dump Truck
- 1-CTS Hopper Trailer, 42', Air Rid, 2012 Yr., Vin 5TU124220C5001137
- 1-CTS Hopper Trailer, 42', Air Rid, 2010 Yr., Vin 5TU12422XA500414
- 1-Fruheauf Tanker Trailer, 1986 Yr., 5000 Gal., SS, SN 4GK018905
- 1-Fruheauf tanker trailer, VIN OMK452401
- 1-16' Trailer, 3 Axle
- 3-Fuel Trailers, 550 Gal., (2-w/12 volt pumps & hoses)
- 1-2006 Club Car UTV
- 1-850 Polaris 4-Wheeler, 2008 yr.

### BACKHOES, FORKLIFTS, EXCAVATOR, DIRT SCOOPS & TILE EQUIPMENT

- 1-580 Super M Case Backhoe, 4 wh., extend-a-hoe, cab & air, 5 way blade, SN JIG0377016
- 1-636 Terex Telehandler, 3282 Hrs., SN 981198
- 1-C300 Clark Fork Lift, LP
- 1-PC200LC-3 Komatsu Excavator, SN 21275
- 1-Reynolds 8 Yard Dirt Scoop, SN 8CF19126
- 1-Reynolds 17C Dirt Scoop, SN 29408
- 1-LSE 16 Reynolds Dirt Scoop, SN 25539
- 1-Trimble Guidance for Dirt Scoops
- 1-Laser trailer

- 1-Midland Box Blade, 12'
- 1-Eversman Land Plane, 40'
- 1-JM Tile Plow, 3 pt.
- 1-Tile Pipe Trailer, Hyd. Tilt
- 1- Set of Forks for backhoe

### POWER UNITS, SHOP EQUIPMENT & MISCELLANEOUS

- 2-P85 Case IH Power Units, 214 Hrs. & 1500 Hrs.
- 1-4391T Case IH Power Unit with generator, SN DJA0008951
- 1-252 Chevrolet Power Unit w/Pump
- 1-Gorman Rupp Pump
- 1-Large Lot of LP Tanks & Trailers
- 2-Air Compressors
- 1-Pressure Washer
- 1-Nitrogen Tank, 2300 Gal.
- 1-225 AC/DC Lincoln Welder
- 1-200 Miller Matic Welder
- 1-ESAB 850 Plasma Cutter
- 1-ESAB 1300 Plasma Cutter
- 1-Wood Splitter
- 1-Lot Planter Parts
- 1-Antique bale loader
- 1-Def. tank w/12 volt pump & hose
- 1-Large lot chemical tanks/totes, approx. 265 gallons
- 1-Lot of disk parts

### CONSIGNMENTS FROM A NEIGHBOR

- 1-Dalton 12 row 30" liquid applicator, 1,000 gallon tank, 380x46 tires
- 1-330 Case IH 34' TurboTill, w/baskets
- 1-183 IH 12 row 30' cultivator, hyd. fold
- 1-Westfield auger, 13x74, electric, swing away
- 1-Orthman 12/30 row bed conditioner, shovels, DoAll, baskets, stack fold, 3 yrs. old

**NOTICE: THIS AUCTION IS CLOSED TO ANY OTHER OUTSIDE CONSIGNMENTS**

LUNCH AVAILABLE  
LOADER AVAILABLE

SALE CONDUCTED BY:

**DeWitt Auction Co.**

NO BUYER  
PREMIUM ADDED

Member Mo. & Miss. Auct. Assoc. - Lic. Nos: MO 14 & 85; AR 390 & 404; AL 611 & 1317; LA 239; Phil DeWitt MS 292; IL Firm No. 444000276; MS Firm No. 410F; TX 6538 & 10982; TN Firm No. 2422; KY 6028; FL 1535; Brandon DeWitt AR 2535, MS 1471, IL 441.002267, KY 4216, TN 6941; Jack Holifield TN 6847, AL 5350, LA 19365

PLANNING AN AUCTION? CONTACT:  
**DeWitt Auction Co.**  
Sikeston, Mo. 63801  
573-471-1060 • 1-800-533-9488

**220 DeWitt Dr. • Sikeston, MO 63801**  
**573-471-1060 • 800-533-9488**

FOR MORE INFORMATION, CONTACT:  
**Gary Francis 573-270-0490**  
or **DeWitt Auction Co.**  
or visit [www.dewittauction.com](http://www.dewittauction.com)

"Your Attendance Always Appreciated"

Note: DeWitt Auction Co. does not guarantee the hours or condition of any item sold in this auction. Announcements made auction day take precedence over printed material.

