

2 FARM LAND AUCTIONS ON THE SAME DAY

TUESDAY, FEBRUARY 27, 2018

1st Sale: 11:00 a.m. at DeWitt Auction Co. Lot in Sikeston, MO - 2nd Sale: 2:00 p.m. at Dudley, MO Community Center

1ST SALE
11:00 a.m.

SIKESTON, MISSOURI Sale Site: Dewitt Auction Co. Lot

APPROXIMATELY 235 ACRES +/- LOCATED IN SCOTT AND STODDARD COUNTY, MO.

OWNER: MAYS FARMS - Wayne Mays 573-624-0922

Tract 1: 148 Acres +/-
Located 5 miles west of Sikeston, MO in Scott County

Highly productive farm land. Approx. 1/2 irrigated with 2 wells. Suitable for cotton, corn, beans and wheat.

Directions: From Sikeston, MO go west on Highway Y approx. 5 miles to Highway Z. Go north on Highway Z 1/2 mile to farm on west side of road. Watch for signs.

Tract 2: 8 Acres +/-
Located 5 miles west of Sikeston, MO in Scott County

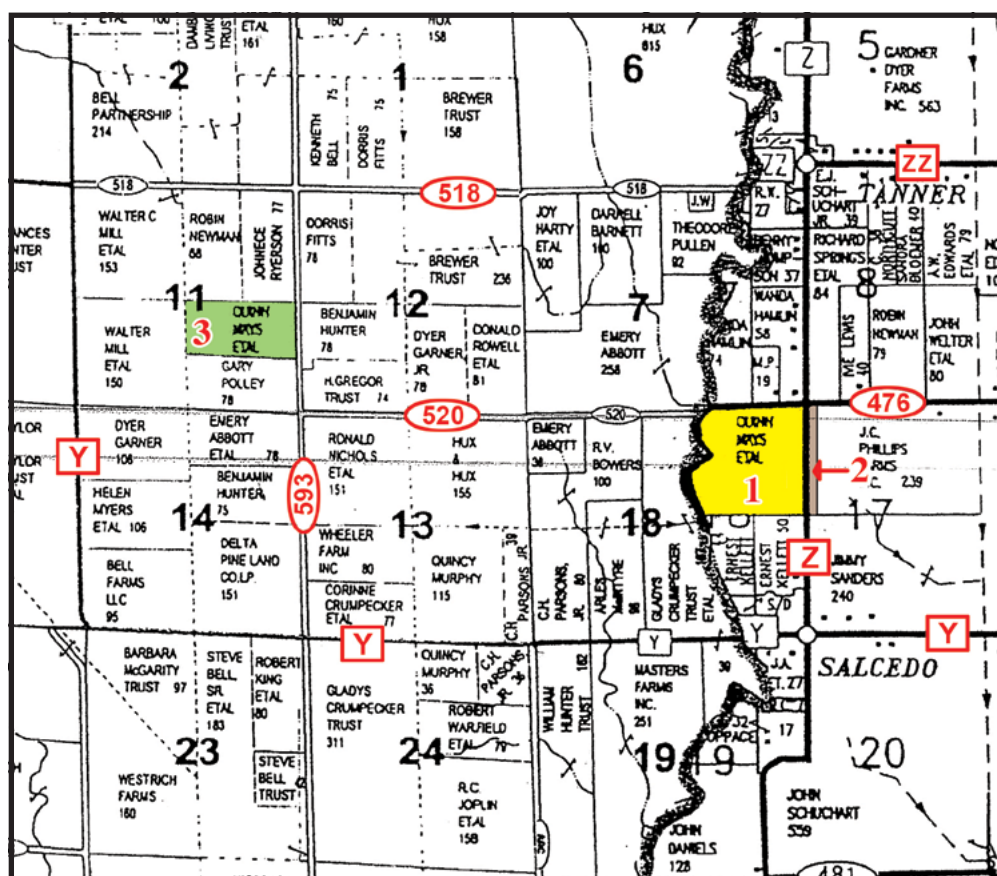
Suitable for use as homesites or farming.

Directions: From Sikeston, MO go west on Highway Y approx. 5 miles to Highway Z. Go north on Highway Z 1/2 mile to farm on west side of road. Watch for signs.

Tract 3: 79 Acres +/-
Located 7 miles west of Sikeston, MO in Stoddard County

Highly productive farm land suitable for rice corn and beans. Irrigated with 2 wells and 1 turbine.

Directions: From Sikeston, MO go west on Highway Y approx. 7 miles to County Road 593. Go north on County Road 593 1.5 miles to farm on west side of road. Watch for signs.



2ND SALE
Sale Time: 2:00 p.m.

DUDLEY, MISSOURI
Sale Site: Dudley Community Center

Owner: Leta Keena Farm

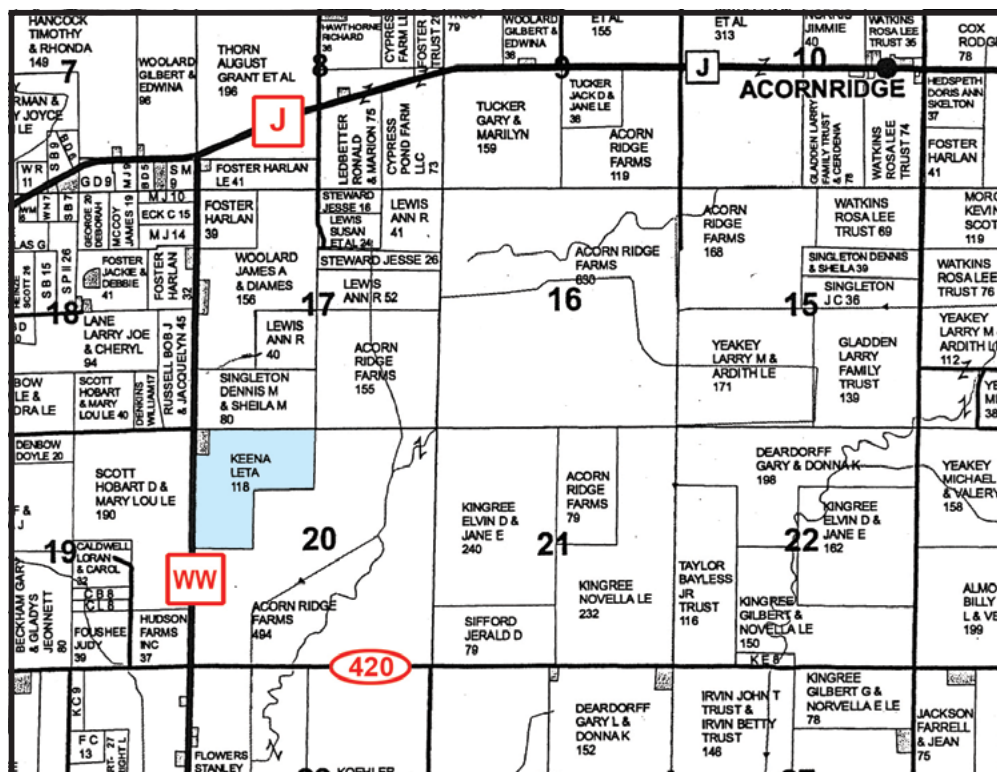
115 Acres +/-

Located north of Dudley, MO in Stoddard County

Highly productive farm land suitable for corn, beans and wheat.

Directions: From Dudley, MO go north on Highway WW for 7 1/4 miles to farm on east side of road. Watch for signs.

***Note:** Approximately 40 acres of wheat planted. Buyer will receive 1/3 crop rent then possession after wheat is harvested. Remaining 75 acres, buyer will have immediate possession at closing for crop year 2018.



FOR MORE INFORMATION, CONTACT: KENNETH BELL 573-380-0928

AUCTIONS CONDUCTED BY:

DeWitt Auction Co.

Member Mo. & Miss. Auctioneer Assoc. - Lic. Nos: MO 14 & 85; AR 390 & 404; AL 611 & 1317; LA 239; Phil DeWitt MS 292; IL Firm No. 444000276; MS Firm No. 410F; TX 6538 & 10982; TN Firm No. 2422; KY 6028; FL 1535; Brandon DeWitt AR 2535, MS 1471, IL 441.002267, KY 4216, TN 6941; Jack Holifield TN 6847, AL 5350, LA 19365; Larry Garner TN 259, AL 100, AR 1764, MS 209 • Nicole VonderHaar MO Real Estate Broker/Broker-Officer Lic. #2010010870/Corp. Lic. #2013017734

Visit our website: www.dewittauction.com • Announcements made auction day take precedence over printed material.

220 DeWitt Drive • Sikeston, MO 63801 • 573-471-1060 • 1-800-533-9488

"Your Attendance Always Appreciated"

TERMS: Ten percent (10%) payable at time of sale; balance due at closing within 30 days. Closing will be handled by National Title in Dexter, MO. Closing costs split 50/50 between buyer and seller. Taxes will be prorated for 2018. **Immediate possession for 2018 crop year.** (*Except for 40 acres on Leta Keena farm that is currently planted in wheat.)

6% Buyer's Premium added to last bid in order to establish selling price and is payable day of auction.

NOTE: We urge you to drive out and inspect these fine properties before auction day.